

**SLC25A6 Antibody (monoclonal) (M01)****Mouse monoclonal antibody raised against a partial recombinant SLC25A6.****Catalog # AT3913a****Specification**

---

**SLC25A6 Antibody (monoclonal) (M01) - Product Information**

Application	WB, E
Primary Accession	<a href="#">P12236</a>
Other Accession	<a href="#">NM_001636</a>
Reactivity	Human
Host	mouse
Clonality	Monoclonal
Isotype	IgG3 Kappa
Calculated MW	32866

**SLC25A6 Antibody (monoclonal) (M01) - Additional Information****Gene ID** 293**Other Names**

ADP/ATP translocase 3, ADP, ATP carrier protein 3, ADP, ATP carrier protein, isoform T2, ANT 2, Adenine nucleotide translocator 3, ANT 3, Solute carrier family 25 member 6, ADP/ATP translocase 3, N-terminally processed, SLC25A6, ANT3

**Target/Specificity**

SLC25A6 (NP\_001627, 135 a.a. ~ 209 a.a) partial recombinant protein with GST tag. MW of the GST tag alone is 26 KDa.

**Dilution**

WB~~1:500~1000

E~~N/A

**Format**

Clear, colorless solution in phosphate buffered saline, pH 7.2 .

**Storage**

Store at -20°C or lower. Aliquot to avoid repeated freezing and thawing.

**Precautions**

SLC25A6 Antibody (monoclonal) (M01) is for research use only and not for use in diagnostic or therapeutic procedures.

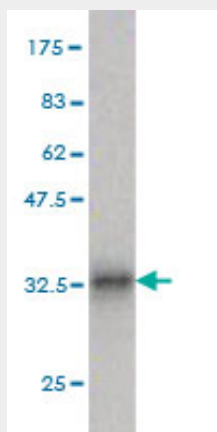
**SLC25A6 Antibody (monoclonal) (M01) - Protocols**

Provided below are standard protocols that you may find useful for product applications.

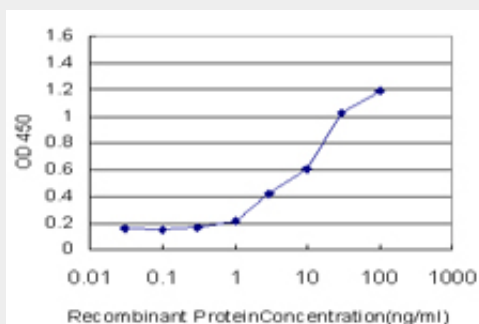
- [Western Blot](#)

- [Blocking Peptides](#)
- [Dot Blot](#)
- [Immunohistochemistry](#)
- [Immunofluorescence](#)
- [Immunoprecipitation](#)
- [Flow Cytometry](#)
- [Cell Culture](#)

### SLC25A6 Antibody (monoclonal) (M01) - Images



Antibody Reactive Against Recombinant Protein. Western Blot detection against Immunogen (33.99 KDa) .



Detection limit for recombinant GST tagged SLC25A6 is approximately 1ng/ml as a capture antibody.

### SLC25A6 Antibody (monoclonal) (M01) - Background

This gene is a member of the mitochondrial carrier subfamily of solute carrier protein genes. The product of this gene functions as a gated pore that translocates ADP from the mitochondrial matrix into the cytoplasm. The protein is implicated in the function of the permeability transition pore complex (PTPC), which regulates the release of mitochondrial products that induce apoptosis. The human genome contains several non-transcribed pseudogenes of this gene.

### SLC25A6 Antibody (monoclonal) (M01) - References

Molecular interactions between mitochondrial membrane proteins and the C-terminal domain of PB1-F2: an in silico approach. Danishuddin M, et al. J Mol Model, 2010 Mar. PMID 19669810. Down-regulation of adenine nucleotide translocase 3 and its role in camptothecin-induced apoptosis in human hepatoma QGY7703 cells. Hu Z, et al. FEBS Lett, 2009 Jan 22. PMID 19111545. Adenine nucleotide (ADP/ATP) translocase 3 participates in the tumor necrosis factor induced apoptosis of MCF-7 cells. Yang Z, et al. Mol Biol Cell, 2007 Nov. PMID

17855512. Proteomics analysis of the interactome of N-myc downstream regulated gene 1 and its interactions with the androgen response program in prostate cancer cells. Tu LC, et al. Mol Cell Proteomics, 2007 Apr. PMID 17220478. IL-4-induced upregulation of adenine nucleotide translocase 3 and its role in Th cell survival from apoptosis. Jang JY, et al. Cell Immunol, 2006 May. PMID 16930576.